

Piccolo

2 Flauti

2 Oboi

2 Clarinetti  
Sax Alto

Fagotti I  
Fagotti II

4 Corni  
in

2 Trombe  
in

3 Trombone  
e  
Tuba

Timpani  
Tom-Tom  
piatti  
Tam-Tam

Arpa  
e  
Piano

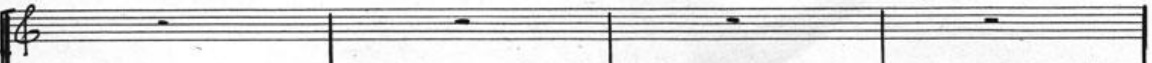
Violini I  
Violini II

Viola

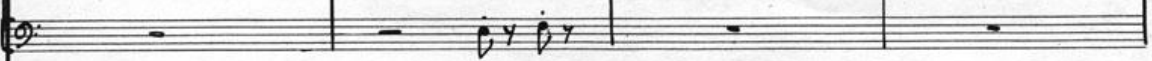
Celli

C-Bassi

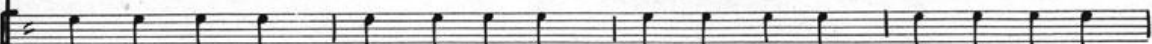
Sax Alt



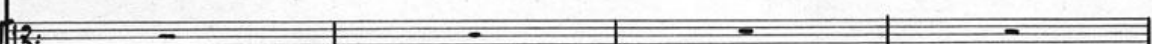
Fg.



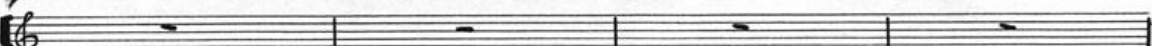
Tom-tom



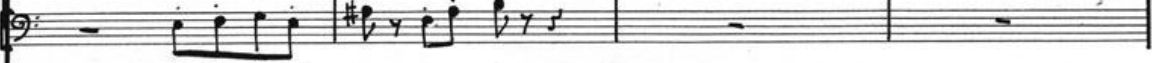
Viola



Sax-Alt



Fg.



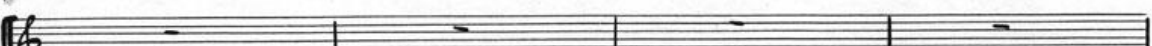
Tom-tom



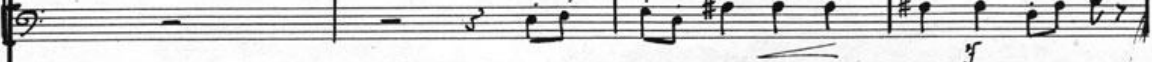
Viola



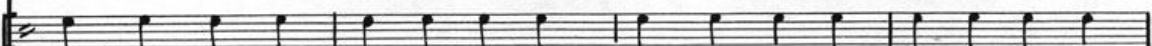
Sax Alt



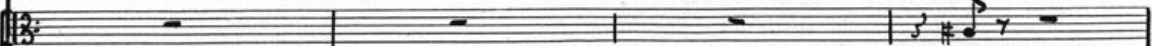
Fg.



Tom-tom



Viola



pizz

my

2

Sax Alt.

Handwritten musical notation for Saxophone part 1. It begins with a treble clef, a key signature of one sharp (F#), and a dynamic marking of *mp*. The melody consists of a half note, followed by a quarter note, and then a series of eighth notes, all under a slur. The notation continues across four measures.

Fagotto

Handwritten musical notation for Bassoon part 1. It begins with a bass clef and a key signature of one sharp (F#). The part features a rhythmic pattern of eighth notes with slurs and accents throughout the four measures.

Tom-tom

Handwritten musical notation for Tom-tom part 1. It consists of a steady, rhythmic pattern of quarter notes across four measures.

Viola

Handwritten musical notation for Viola part 1. The staff contains four whole rests, indicating the instrument is silent for this section.

Sax Alt.

Handwritten musical notation for Saxophone part 2. It begins with a treble clef, a key signature of one sharp (F#), and a dynamic marking of *mp*. The melody is more complex, featuring slurs, accents, and some chromatic movement. The notation spans four measures.

Fagotto

Handwritten musical notation for Bassoon part 2. It continues with a bass clef and a key signature of one sharp (F#), featuring a rhythmic pattern of eighth notes with slurs and accents.

Tom-tom

Handwritten musical notation for Tom-tom part 2. It continues with a steady, rhythmic pattern of quarter notes across four measures.

Viola

Handwritten musical notation for Viola part 2. The staff contains four whole rests for the first three measures. In the fourth measure, there is a short melodic phrase starting with a dynamic marking of *mp* and a *pizz* (pizzicato) instruction.

Piccolo

Fagotti I

Fagotti II

Trombe I

Trombe II

Timpani

Tom-tom

Piatti

Tam-tam

Violini I

Violini II

Viola

Celli

C-Bassi

3

Piccolo

Musical notation for Piccolo, featuring a treble clef and a key signature of one sharp (F#). The staff contains four measures of music with dynamic markings *mf* and *f*. Above the staff, there are three wavy lines indicating trills or tremolos, each starting with a *p* dynamic marking.

Fagotti

Musical notation for Fagotti I and II, featuring a bass clef and a key signature of one sharp (F#). The staff contains four measures of music with various note values and rests.

Trombe

Musical notation for Trombe I and II, featuring a treble clef and a key signature of one sharp (F#). The staff contains four measures of music with dynamic markings *f* and *ff*.

Timpani

Musical notation for Timpani, featuring a single line with a key signature of one sharp (F#). It contains four measures of music with dynamic markings *f* and *ff*.

Tom-tom

Musical notation for Tom-tom, featuring a single line with a key signature of one sharp (F#). It contains four measures of music with dynamic markings *f* and *ff*.

Piatti

Musical notation for Piatti, featuring a single line with a key signature of one sharp (F#). It contains four measures of music with dynamic markings *f* and *ff*.

Tam-tam

Musical notation for Tam-tam, featuring a single line with a key signature of one sharp (F#). It contains four measures of music with dynamic markings *f* and *ff*.

Violini

Musical notation for Violini I and II, featuring a treble clef and a key signature of one sharp (F#). The staff contains four measures of music with dynamic markings *mf* and *f*. Above the staff, the instruction *arco e col legno (secco)* is written.

Viola

Musical notation for Viola, featuring a bass clef and a key signature of one sharp (F#). The staff contains four measures of music with dynamic markings *mf* and *f*.

Celli

Musical notation for Celli, featuring a bass clef and a key signature of one sharp (F#). The staff contains four measures of music with dynamic markings *mf* and *f*.

C-Bassi

Musical notation for C-Bassi, featuring a bass clef and a key signature of one sharp (F#). The staff contains four measures of music with dynamic markings *mf* and *f*. The instruction *pizz* is written below the staff.

4

Corno I

Trombe I  
II

Timp  
Piatti  
Tam-tam

Corno I

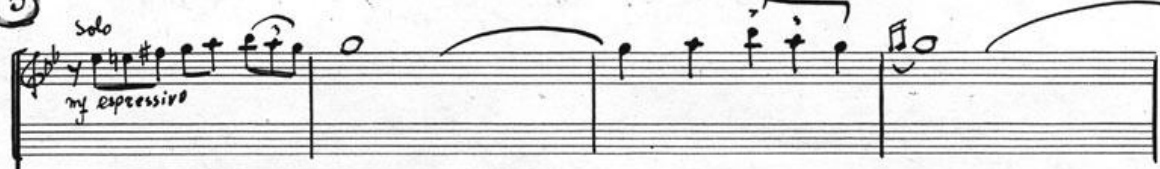
Trombe I  
II

Timp.  
Piatti  
Tam-tam

5

Clarinetto

*Solo*  
*ny espressivo*



Musical notation for the Clarinet part, featuring a melodic line with slurs and a fermata at the end of the first measure.

Corno I

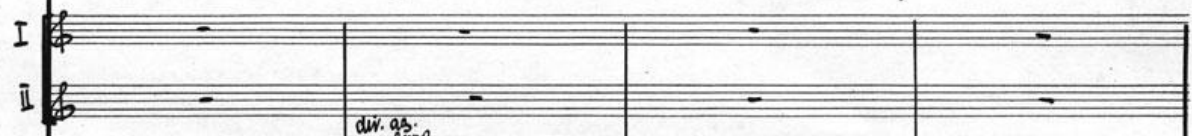
*ppp*



Musical notation for the Horn I part, showing a whole rest in the first measure.

Violini

I  
II



Musical notation for the Violin I and II parts, showing whole rests in the first measure.

Viola

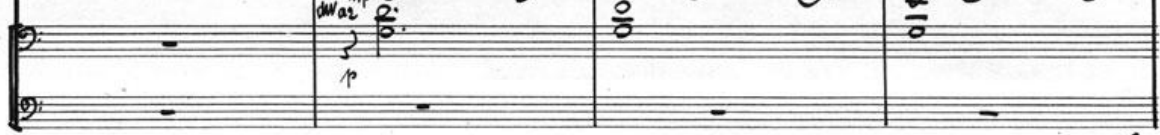
*div. as. col. l'op.*  
*mp*



Musical notation for the Viola part, featuring a melodic line with slurs and dynamic markings.

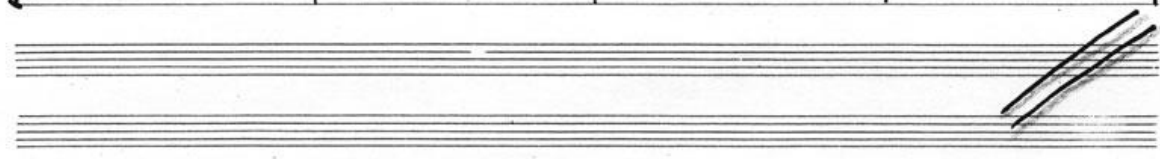
Celli

*mp*



Musical notation for the Cello part, showing a melodic line with slurs and dynamic markings.

C-Bassi



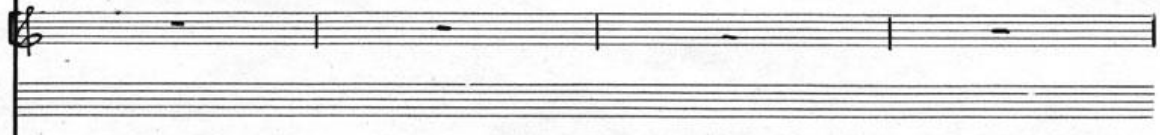
Musical notation for the Bass part, showing a whole rest in the first measure.

Clarinetto



Musical notation for the Clarinet part, featuring a melodic line with slurs and a fermata at the end of the first measure.

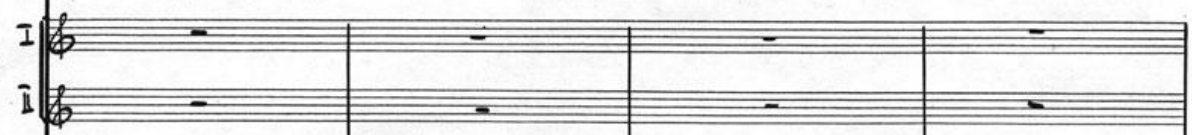
Corno I



Musical notation for the Horn I part, showing a whole rest in the first measure.

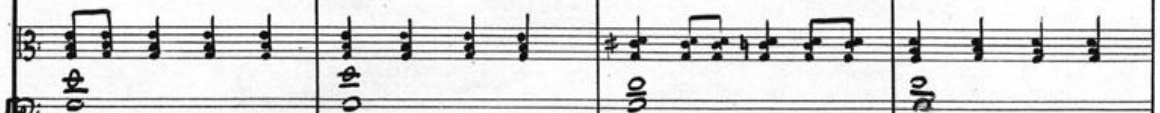
Violini

I  
II



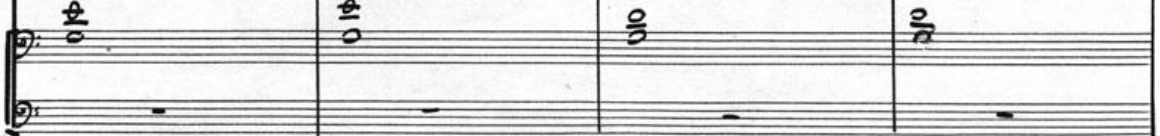
Musical notation for the Violin I and II parts, showing whole rests in the first measure.

Viola



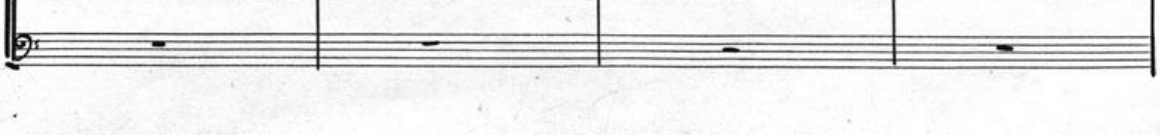
Musical notation for the Viola part, featuring a melodic line with slurs and dynamic markings.

Celli



Musical notation for the Cello part, showing a melodic line with slurs and dynamic markings.

C-Bassi



Musical notation for the Bass part, showing a whole rest in the first measure.

Piccolo

clarinetto

4 Corni

Violini I

II

Viola

Celli

C-Bassi

The image shows a handwritten musical score for a symphony orchestra. The score is written on a series of staves. The instruments listed on the left are Piccolo, Clarinetto, 4 Corni, Violini I, Violini II, Viola, Celli, and C-Bassi. The Piccolo part has a melodic line with some grace notes. The Clarinetto part has a complex melodic line with many notes and some slurs. The 4 Corni part is mostly empty, with some rests. The Violini I and II parts are mostly empty, with some rests. The Viola part has a rhythmic pattern of eighth notes. The Celli and C-Bassi parts have some notes and rests. The score is written in a clear, legible hand.



©

Piccolo  
Flauti

Oboi I  
II

Clarineti I  
II

Fagotti I  
II

4 Corni

2 Trombe I  
II

Trombone  
e  
Tuba

Timpani

Tom-tom

piatti

Tam-tam

Violini I  
II

Viola

celli

C-Bassi

This is a handwritten musical score for a symphony orchestra. The score is arranged in systems. The top system includes Piccolo, Flauti, Oboi I and II, Clarineti I and II, and Fagotti I and II. The second system includes 4 Corni, 2 Trombe I and II, Trombone e Tuba, Timpani, Tom-tom, piatti, and Tam-tam. The bottom system includes Violini I and II, Viola, celli, and C-Bassi. The score features various musical notations such as notes, rests, slurs, and dynamic markings like 'espressivo' and 'f'. There are also some handwritten annotations and a circled '©' symbol at the top.

7

Flauti

Oboi I

Oboi II

Clar. I

Clar. II

Fagotti I

Fagotti II

4 corni

Trombe I

Trombe II

Tromboni e tuba

Timp.

Tom-tom

Piatti

Tam-tam

Violini I

Violini II

Viola

Celli

C-Bassi

*solo*

*p*

*non toccare né stringere*

*subponticello*  
*col legno*

*mf* *sul ponticello*  
*arco*

*mf* *sul ponticello*  
*col legno*

*ppp*

*ppp*

*ppp*

8

Piccolo  
Flauti

solo I *Cantabile*  
mp

Corni

Piano

*legatissimo*  
p  
ped.

Violini I

pp. *dux.*

II

Viola

pp

Celli

pp

C-Bassi

Picc  
Fl.

*Tenuato*

Corni

piano

Violini I  
Violini II  
Viola  
Celli  
C-Bassi

Piccolo  
2 Flauti

2 Corni

Trombone

Piano

Violini

Viole

Celli

C-Bassi

The image shows a page of handwritten musical notation for an orchestra. The score is arranged in a system with multiple staves. The instruments listed on the left are Piccolo, 2 Flauti, 2 Corni, Trombone, Piano, Violini, Viole, Celli, and C-Bassi. The Trombone part is marked "I solo cantabile" and "mp". The Piano part features a melodic line with a sharp sign in the final measure. The Violini part consists of two staves with rhythmic patterns. The Viola, Cello, and Bass parts are mostly rests. The Piccolo and Flute parts are also mostly rests. The Horns part shows some notes in the first measure. The notation is in black ink on a white background.

Pic.

Fl

Cor.

Tr. re

Piano

Violini I

II

Viole

Celli

C-Bassi

*ppp*

*Coff*