

Песня про

саямевий кону

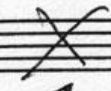
М-минор



Изяццо, цронццо

Музыкальный фрагмент 1. Включает ноты для голоса и фортепиано. Слова: *В ки но кон гол иел жаст ным ну арос то не сби*

Музыкальный фрагмент 2. Включает ноты для голоса и фортепиано. Слова: *ба еи в ки но кон гол срат ли вим зна вонсво таге го*



Музыкальный фрагмент 3. Включает ноты для голоса и фортепиано. Слова: *но и взрала е и гети ат ми но с то*

Знают

о - со бещ но, о бещ но, о - со бещ но, о -

This system contains a vocal line and piano accompaniment. The vocal line is written in a treble clef with a key signature of one sharp (F#) and a 3/4 time signature. The lyrics are written below the notes. The piano accompaniment is written in a bass clef with a 3/4 time signature, featuring a simple harmonic accompaniment.

I volta al Segno.

со бещ но, о со бещ но ко мо бещ хо дит в ки

This system is marked 'I volta al Segno'. It features a vocal line and piano accompaniment. The vocal line continues the melody from the first system. The piano accompaniment includes a change in key signature to natural (F natural) and a 3/4 time signature.

II volta

но (о) со бещ но в ки но (ко нежно ко на

This system is marked 'II volta'. It features a vocal line and piano accompaniment. The vocal line includes a fermata over the first note. The piano accompaniment includes a change in key signature to one sharp (F#) and a 3/4 time signature.

Handwritten musical score for the first system. The vocal line (treble clef) contains the lyrics: "го лу ти мо-жемо Бур нес застину Сму го ет а 2го". The piano accompaniment consists of chords in the right hand and a bass line in the left hand.

Handwritten musical score for the second system. The vocal line contains the lyrics: "красо те бе не но без но Но раз-бе". Above the vocal line, there is a circled section titled "Богрши (Волле)" with a dynamic marking of *f*. The piano accompaniment continues with chords and a bass line.

Handwritten musical score for the third system. The vocal line contains the lyrics: "мии нос бо-лии о-та вить". The piano accompaniment features chords in the right hand and a bass line in the left hand.



Handwritten musical score for the first system. The vocal line (treble clef) contains the lyrics: "без у - во - зра - з то - го кто не ре - ка ме роу - е - го". The piano accompaniment consists of two staves (treble and bass clefs) with chords and rhythmic patterns.

Handwritten musical score for the second system. The vocal line (treble clef) contains the lyrics: "и от - го ра ка мен ный мы ту - же ку хо ка ме роу и с - па - ва - м - го". The piano accompaniment continues with chords and rhythmic patterns.

Handwritten musical score for the third system. It begins with the lyrics "з - ло и с" and includes a "da capo al fine" instruction. A significant portion of the notation is crossed out with heavy black scribbles. The lyrics "а. нота му (13 кунд ит)" are written at the end of the system.

2m. 15